

SE-1/SE-3

Single/Three-channel ECG



Technical Specifications

| | SE-1 Single Channel ECG | SE-3 Three-Channel ECG |
|---------------------------|------------------------------------------------------------------------------------------------------------------------------------------------------|--------------------------------------------------------------------------------------------------------------------------------------------------------------------------|
| Input Circuit | Defibrillator protection built-in | |
| Lead | Standard 12 leads | |
| Acquisition Mode | Single lead | 12 leads simultaneously |
| A/D Converter | 12 bits | 12 bits / 24 bits (optional DE12 ECG board) |
| Measurement Range | ± 5mVpp | |
| Time Constant | > 3.2s | |
| Frequency Response | 0.05Hz ~ 150Hz (-3dB) | |
| Calibration Voltage | 1mV ± 3% | |
| Sensitivity | 2.5, 5, 10, 20 (mm/mV) | |
| Input Impedance | > 50MΩ | > 50MΩ |
| Input Circuit Current | <0.05μ A | |
| Noise Level | <15 μ Vp-p | |
| Baseline Adjustment | Automatic | |
| Patient Leakage Current | < 10 μ A (220V-240V) | |
| Patient Auxiliary Current | <0.1 μ A (DC) | |
| Filter | EMG Filter 35Hz (-3dB) AC Filter 50 Hz/60Hz (-20dB) | EMG Filter 25Hz/35Hz/45Hz /OFF DFT Filter 0.05/0.15/0.25/0.5Hz 0.32/0.67 Hz (optional DE12 ECG board) Lowpass Filter 150Hz/100Hz/75Hz AC Filter 50 Hz/60Hz |
| CMRR | >110dB | >110dB / >115dB (optional DE12 ECG board) |
| Recording Mode | Auto: 1CH, 1CH+1R Manual: 1CH | Auto: 3CH, 3/2 CH, 3CH+1R, 1CH, 1CH+1R Manual: 3CH, 3/2 CH, 1CH Rhythm: Single rhythm lead |
| Rhythm Lead | Any lead selectable | |
| Power Supply | AC: 100V-115V/220V-240V, 50/60Hz Built-in rechargeable Li-ion battery: voltage=14.8V More than 3 hrs continuous recording under battery supply | |
| Recorder | Thermal printer | |
| Record Paper | 50mm x 30m | 80mm x 20m |
| Paper Speed | 25mm/s, 50mm/s (± 3%) | 5mm/s, 6.25mm/s, 10mm/s, 12.5mm/s, 25mm/s 50mm/s (± 3%) |
| Dimension | 288mm x 210mm x 70mm | |
| Weight | 2.3kg | 2.5kg |
| Display | 192 x 64 pixels LCD | 320 x 240 pixels LCD (Wide Screen) 192 x 64 pixels LCD (Narrow Screen) |
| External Input/Output | Input: > 100 kΩ ; Sensitivity 10mm/V ± 5% Output: < 100 Ω ; Sensitivity 1V/mV ± 5% | |
| Communication Interface | N/A | Ethernet, RS232 |



SE-1/SE-3

3 قناة - شاشة عريضة

Single/Three-channel ECG



ENG-ECG-SE1&SE3-V1.1-20090807

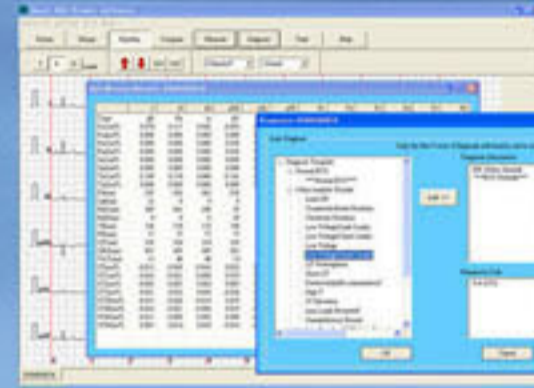
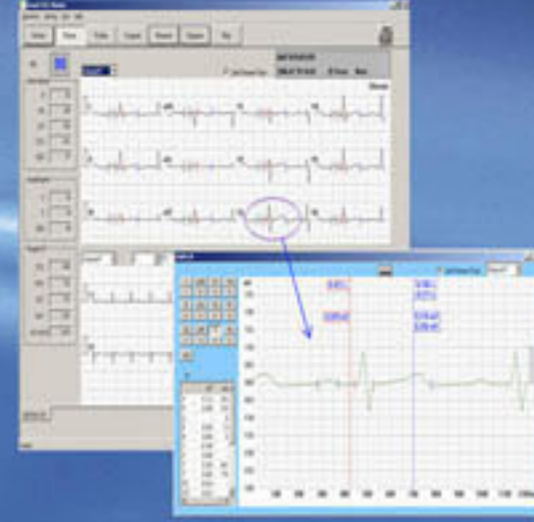
SE-3 Three - Channel ECG



SE-3(Wide Screen) - ٣ قناة - شاشة عريضة

- Foldable LCD screen, vivid waveform display
- 12 leads simultaneous acquisition
- Built-in high-resolution thermal printer
- Built-in rechargeable Li-ion battery, AC/DC power supply
- Automatic ECG measurement and interpretation

Smart ECG Viewer



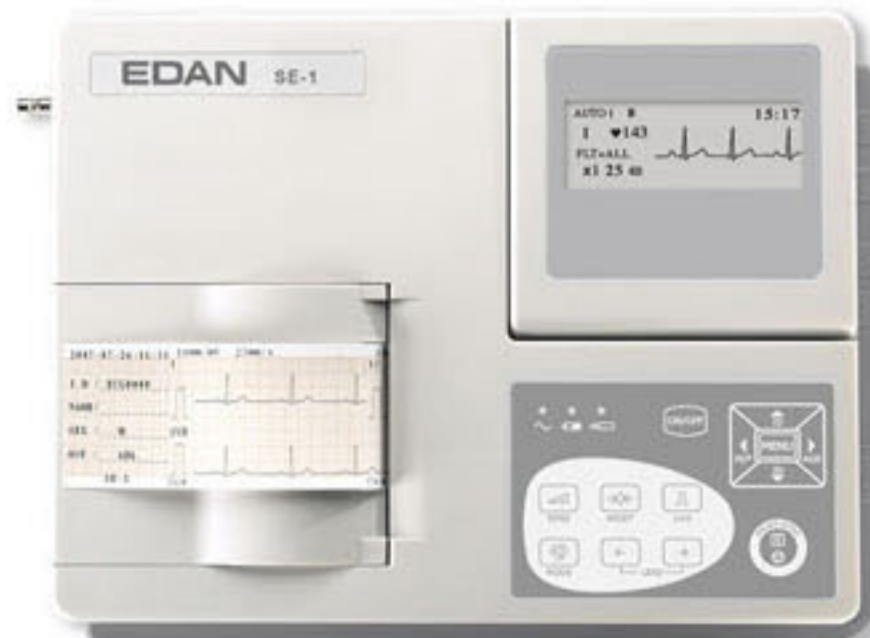
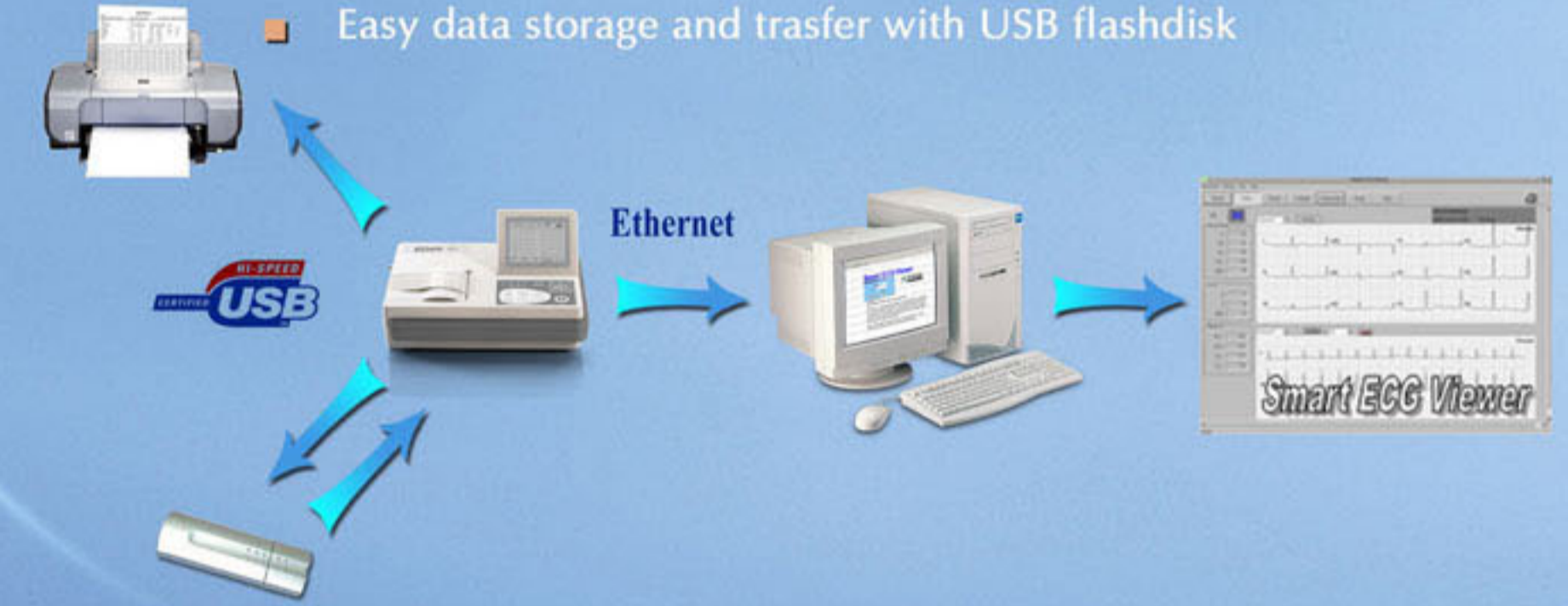
PC-based ECG data management software

- Complete digital filtering, resisting baseline drift, AC and EMG interference
- Automatic baseline adjustment
- Auto/manual work mode
- Lead-off detection and alert
- Three printing formats (Auto, manual and rhythm) selectable
- Heart rate variability (HRV) analysis



SE-3(Narrow Screen)

- 12 leads printing by external ink-jet printer
- Large patient data storage: 120 ECGs (Narrow Screen) 144 ECGs (Wide Screen)
- PC-based ECG data management software (option)
- Easy data storage and transfer with USB flashdisk



١ قناة - بشاشة

SE-1 Single Channel ECG

- Foldable LCD screen, vivid waveform display
- Built-in high-resolution thermal printer
- Built-in rechargeable Li-ion battery, AC/DC power supply
- Well designed membrane keyboard

- Digital filtering, resisting baseline drift, AC and EMG interference
- Automatic baseline adjustment
- Auto/manual work mode
- Lead-off detection and alert

